

PSALLITE

Sacred  
Song  
for  
Liturgy  
and  
Life

PLANTED LIKE A TREE

The Collegeville Composers Group

Carol Browning

Catherine Christmas

Cyprian Consiglio, O.S.B. Cam.

Paul F. Ford, Ph.D.

Paul Inwood




LITURGICAL PRESS

1-800-858-5450 [www.litpress.org](http://www.litpress.org)

# Planted Like a Tree

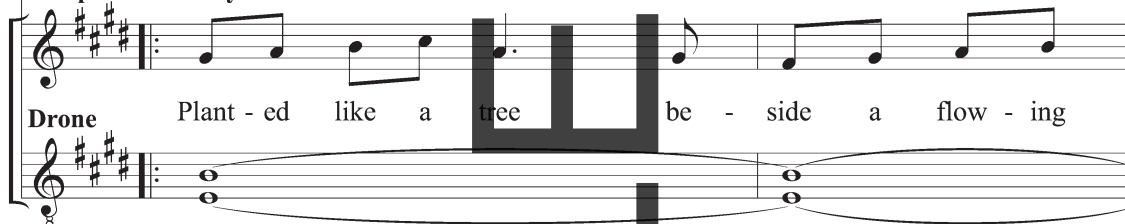
P183-C

Verses (Superimposed) Psalm 1:1-4, 6

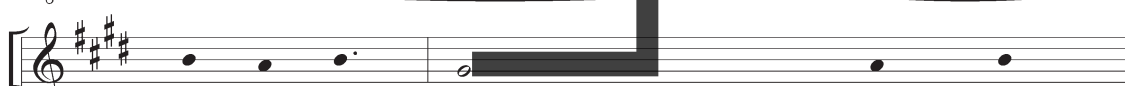


1. Happy indeed are those who follow not the counsel  
 2. but whose delight is the law of the LORD and who ponder God's law  
 3. that yields its fruit in due season and whose leaves shall  
 4. For they like winnow - ed chaff shall be driven away

Antiphon / Melody ♩ = 65




Plant - ed like a tree be - side a flow - ing




1. of the wicked, nor linger in the way of sinners,  
 2. day and night. They are like a tree that is planted  
 3. ne - ver fade; and all that they do shall prosper.  
 4. by the wind. For the LORD guards the way of the just



stream, blest in - deed are they whose



1. nor sit in the company of scorners,  
 2. beside the flow - ing waters,  
 3. Not so are the wicked, not so!  
 4. but the way of the wicked leads to doom.



hope is in the Lord.

## Performance Notes

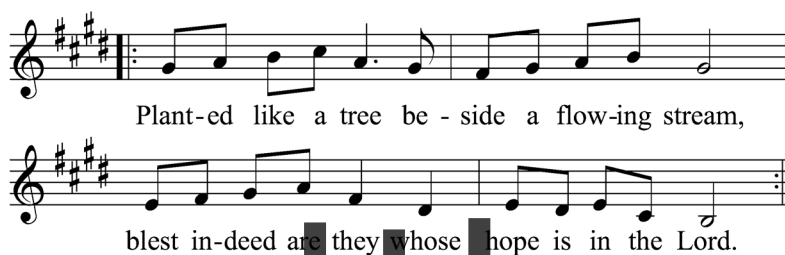
The Drone is preferably hummed (to an 'n' sound rather than an 'm' sound). Verses are sung without pausing between stanzas. During the verses, the melody line of the antiphon may be vocalized to 'oo.'

If desired, the verses could be chanted independently on the tone given and not superimposed over the antiphon.

When the assembly sings the antiphon without a superimposed verse, choir voices may add the drones.

## Planted Like a Tree

P183-P



Music and text from *Psallite*, © 2006, The Collegeville Composers Group. All rights reserved.  
Published and administered by the Liturgical Press, Collegeville, MN 56321. Used with permission.

## Reprint Policy

All content available from the Liturgical Press website is protected by copyright and is owned or administered by Liturgical Press.

You may print or download to a local hard disk the music graphic for your personal and non-commercial use only equal to the number of copies purchased. Each reproduction must include the title and full copyright notice as it appears on the graphic.

Before reproducing the assembly graphic you must secure the appropriate Reprint License. The following Reprint License options are available: 1) the purchase of a \$35.00 Annual Reprint License from the Liturgical Press (the reporting of titles is not required when reproduced) or 2) membership with the licensing service OneLicense.net (you must report the use of titles each time they are reproduced).

**Unauthorized copying, reproducing, republishing, uploading, downloading, distributing, posting, transmitting, or duplicating any of the material is prohibited.**