

# PSALLITE

Sacred  
Song  
for  
Liturgy  
and  
Life

**YOU ALONE ARE LORD**

**SAMPLE**

**The Collegeville Composers Group**

Carol Browning

Catherine Christmas

Cyprian Consiglio, O.S.B. Cam.

Paul F. Ford, Ph.D.

Paul Inwood



**LITURGICAL PRESS**

1-800-858-5450 [www.litpress.org](http://www.litpress.org)

# You Alone Are Lord

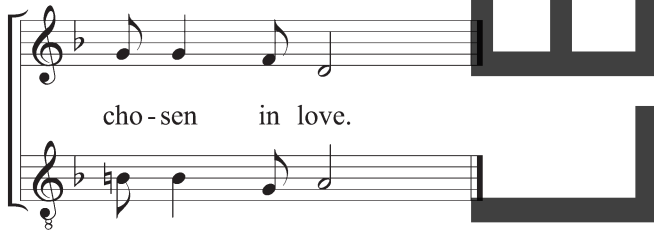
P270-C

Antiphon / Melody ♩ = ca. 76



You a-lone are Lord, there is no o-ther; we be-long to you,

Tenor Descant



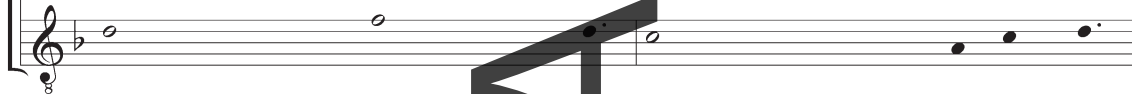
cho-sen in love.

Verses / Melody Psalm 33:10-22



1. The LORD foils the de - signs of the nations, and defeats the plans of the peoples.
2. They are happy, whose God is the LORD, the people who are chosen as his own.
3. From the heavenly dwelling God gazes on all the dwellers on the earth;
4. A king is not saved by his army, nor a warrior preserved by his strength.
5. The LORD looks on those who fear him, on those who hope in his love,
6. Our soul is waiting for the LORD. The LORD is our help and our shield.
7. [ omit ]

Tenor Descant



1. The counsel of the LORD stands for ever, the plans of God's heart from age to age.
2. From the heavens the LORD looks forth and sees all the peoples of the earth.
3. God who shapes the hearts of them all and considers all their deeds.
4. A vain hope for safety is the horse, despite its power it can - not save.
5. to rescue their souls from death, to keep them alive in famine.
6. Our hearts find joy in the LORD. We trust in God's ho - ly name.
7. May your love be up - on us, O LORD, as we place all our hope in you.



## You Alone Are Lord

P270-P

Two staves of musical notation in G major, 4/4 time. The first staff contains the melody for the first line of the hymn, and the second staff contains the melody for the second line. The lyrics are printed below the notes.

You a-lone are Lord, ——— there is no o-ther;  
we be-long to you, cho-sen in love.

Music and text from *Psallite*, © 2007, The Collegeville Composers Group. All rights reserved.  
Published and administered by the Liturgical Press, Collegeville, MN 56321. Used with permission.

### Reprint Policy

All content available from the Liturgical Press website is protected by copyright and is owned or administered by Liturgical Press.

You may print or download to a local hard disk the music graphic for your personal and non-commercial use only equal to the number of copies purchased. Each reproduction must include the title and full copyright notice as it appears on the graphic.

Before reproducing the assembly graphic you must secure the appropriate Reprint License. The following Reprint License options are available: 1) the purchase of a \$35.00 Annual Reprint License from the Liturgical Press (the reporting of titles is not required when reproduced) or 2) membership with the licensing service OneLicense.net (you must report the use of titles each time they are reproduced).

**Unauthorized copying, reproducing, republishing, uploading, downloading, distributing, posting, transmitting, or duplicating any of the material is prohibited.**